

FROM 12,5 - 18 KW



ES884 - H6161H0624
Kw 16,0-S1/18,0-S6 - HSK E63 - long nose - 15.000rpm - liquid cooling 380V



ES884 - H6161H0831
Kw 16,0-S1/18,0-S6 - HSK F80 - long nose - 12.000rpm - liquid cooling 380V



ES793 - H6161H1284
Kw 15,0-S1/18,0-S6 - HSK A63 - 18.000rpm - liquid cooling 380V - opt. rotary joint - encoder LB 1Vpp



ES332 - H6161H1294
Kw 13-S1/15,6-S6 - HSK A40 - 32.000rpm - liquid cooling 380V - encoder LB 1Vpp - no rotary joint



ES332 - H6161H1296
Kw 13-S1/15,6-S6 - HSK A40 - 32.000rpm - liquid cooling 380V - encoder LB 1Vpp - rotary joint



ES332 - H6161H1432
Kw 13-S1/15,6-S6 - HSK E40 - 24.000rpm - liquid cooling 380V - encoder LB 1Vpp - no rotary joint



ES332 - H6161H1433
Kw 13-S1/15,6-S6 - HSK E40 - 32.000rpm - liquid cooling 380V - encoder LB 1Vpp - no rotary joint



ES929 - H6161H0765
Kw 16,0-S1/18,0-S6 - HSK F63 - long nose - 24.000rpm - liquid cooling 380V



ES929 - H6161H0906
Kw 16-S1/18-S6 - HSK F63 - short nose - 24.000rpm - liquid cooling 380V



ES789 - H6161H0462
Kw 15,0-S1/18,0-S6 - HSK F63 - long nose - 18.000rpm - liquid cooling 380V



ES789 - H6161H0526A
Kw 15,0-S1/18,0-S6 - HSK F63 - long nose - 24.000rpm - liquid cooling 380V



ES789 - H6161H0538A
Kw 15,0-S1/18,0-S6 - HSK F63 - long nose - 24.000rpm - liquid cooling 380V



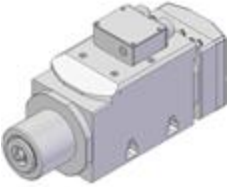
ES789 - H6161H0585A
Kw 15,0-S1/18,0-S6 - HSK F63 - long nose - 24.000rpm - liquid cooling 380V



ES789 - H6161H0641
Kw 16,0-S1/18,0-S6 - HSK F63 - long nose - 24.000rpm - liquid cooling 380V



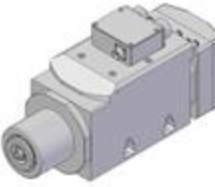
ES789 - H6161H0668A
Kw 15,0-S1/18,0-S6 - HSK F63 - long nose - 24.000rpm - liquid cooling 380V



ES789 - H6161H0690A
Kw 15,0-S1/18,0-S6 - HSK F63 - long nose - 24.000rpm - liquid cooling 380V



ES789 - H6161H0704A
Kw 15,0-S1/18,0-S6 - HSK F63 - long nose - 24.000rpm - liquid cooling 380V



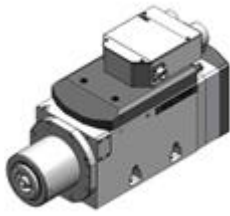
ES789 - H6161H0709A
Kw 15,0-S1/18,0-S6 - HSK F63 - long nose - 24.000rpm - liquid cooling 380V

FROM 12,5 - 18 KW



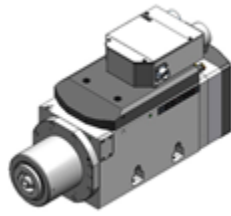
ES789 - H6161H0786

Kw 15,0-S1/18,0-S6 - HSK F63 - long nose - 24.000rpm - liquid cooling 380V



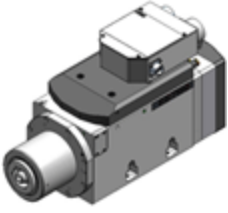
ES789 - H6161H1021

Kw 15,0-S1/18,0-S6 - HSK F63 - long nose - 24.000rpm - liquid cooling 380V - encoder LB 1Vpp - holes - military elect. conn.



ES789 - H6161H1046

Kw 15,0-S1/18,0-S6 - HSK F63 - long nose - 24.000rpm - liquid cooling 220/380V - encoder LB TTL - holes - military elect. conn.



ES789 - H6161H1124

Kw 15,0-S1/18,0-S6 - HSK F63 - long nose - 24.000rpm - liquid cooling 380V - rotary joint - encoder LB TTL - holes - military elect. conn.

ES789 - H6161H1115

Kw 15,0-S1/18,0-S6 - HSK A63 - long nose - 18.000rpm - liquid cooling 380V - encoder LB TTL - holes - military elect. conn.

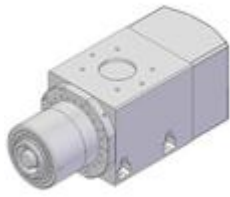
ES789 - H6161H1116

Kw 15,0-S1/18,0-S6 - HSK F63 - long nose - 24.000rpm - liquid cooling 220/380V - holes - military elect. conn.



ES779 - H6161H1177

Kw 13,5-S1/16,2-S6 - HSK F63 - short nose - 24.000rpm - liquid cooling 380V - special holes



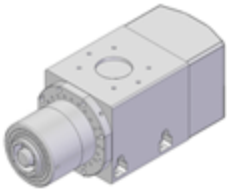
ES779 - H6161H0726A

13,5-S1/16,2-S6 Kw - HSK A63 - long nose - 18.000rpm - liquid cooling 380V - encoder LB 1Vpp - holes



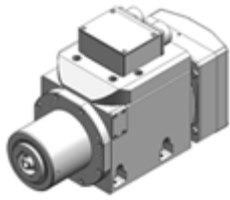
ES779 - H6161H0839

Kw 13,5-S1/16,2-S6 - HSK A63 - long nose - 18.000rpm - liquid cooling 380V - encoder LB 1Vpp - special holes



ES779 - H6161H1261

13,5-S1/16,2-S6 Kw - HSK F63 - long nose - 24.000rpm - liquid cooling 380V - encoder LB TTL - holes



ES779 - H6161H1213

Kw 13,5-S1/16,2-S6 - HSK A63 - long nose - 18.000rpm - liquid cooling 380V - encoder LB 1Vpp - holes - military elect. conn.