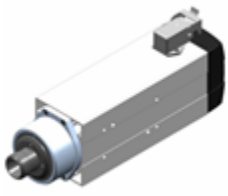


**FROM 2,1 - 5 KW**



**MT1073 - H6162H0133**  
Kw 3-S1/3,60-S6 - connection ER25  
collet - 24.000rpm - rated voltage  
380V - right rotation - side fixing



**MT1073 - Y6162Y0013**  
Kw 3-S1/3,60-S6 - connection ER25  
collet - 18.000rpm - rated voltage  
380V - right rotation



**MT1073 - Y6162Y0069**  
Kw 3-S1/3,60-S6 - connection ER25  
collet - 18.000rpm - rated voltage  
380V - left rotation



**MT1073 - Y6162Y0014**  
Kw 3-S1/3,60-S6 - connection ER25  
collet - 18.000rpm - rated voltage  
380V - right rotation



**MT1073 - Y6162Y0071**  
Kw 3-S1/3,60-S6 - connection ER25  
collet - 18.000rpm - rated voltage  
380V - right rotation



**MT1073 - Y6162Y0016**  
Kw 3-S1/3,60-S6 - connection ER25  
collet - 18.000rpm - rated voltage  
220V - right rotation



**MT1073 - Y6162Y0050**  
Kw 3-S1/3,60-S6 - connection ER25  
collet - 18.000rpm - rated voltage  
220V - left rotation



**MT1073 - Y6162Y0017**  
Kw 3-S1/3,60-S6 - connection ER25  
collet - 18.000rpm - rated voltage  
220V - right rotation



**MT1073 - Y6162Y0057**  
Kw 2,10-S1/2,80-S6 - connection  
ER25 collet - 18.000rpm - rated  
voltage 380V - right rotation



**MT1073 - Y6162Y0034**  
Kw 2,10-S1/2,80-S6 - connection  
ER25 collet - 18.000rpm - rated  
voltage 380V - right rotation



**MT1073 - Y6162Y0058**  
Kw 2,10-S1/2,80-S6 - connection  
ER25 collet - 18.000rpm - rated  
voltage 220V - right rotation



**MT1073 - Y6162Y0040**  
Kw 2,10-S1/2,80-S6 - connection  
ER25 collet - 18.000rpm - rated  
voltage 220V - right rotation



**MT1090 - Y6162Y0018**  
Kw 3,50-S1/4,20-S6 - connection  
ER32 collet - 12.000rpm - rated  
voltage 380V - right rotation



**MT1090 - Y6162Y0019**  
Kw 4,50-S1/5,40-S6 - connection  
ER32 collet - 18.000rpm - rated  
voltage 380V - right rotation



**MT1090 - Y6162Y0053**  
Kw 4,50-S1/5,40-S6 - connection  
ER32 collet - 18.000rpm - rated  
voltage 380V - right rotation



**MT1090 - Y6162Y0020**  
Kw 4,50-S1/5,40-S6 - connection  
ER32 collet - 18.000rpm - rated  
voltage 380V - right rotation



**MT1090 - Y6162Y0021**  
Kw 3,50-S1/4,20-S6 - connection  
ER32 collet - 12.000rpm - rated  
voltage 220V - right rotation



**MT1090 - Y6162Y0022**  
Kw 4,50-S1/5,40-S6 - connection  
ER32 collet - 18.000rpm - rated  
voltage 220V - right rotation

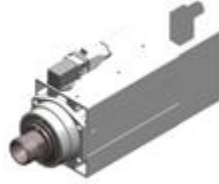
**FROM 2,1 - 5 KW**



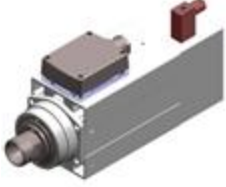
**MT1090 - Y6162Y0023**  
Kw 4,50-S1/5,40-S6 - connection  
ER32 collet - 18.000rpm - rated  
voltage 220V - right rotation



**MT1090 - Y6162Y0059**  
Kw 2,50-S1/3,20-S6 - connection  
ER32 collet - 18.000rpm - rated  
voltage 380V - right rotation



**MT1090 - Y6162Y0035**  
Kw 2,50-S1/3,20-S6 - connection  
ER32 collet - 18.000rpm - rated  
voltage 380V - right rotation



**MT1090 - Y6162Y0060**  
Kw 2,50-S1/3,20-S6 - connection  
ER32 collet - 18.000rpm - rated  
voltage 220V - right rotation



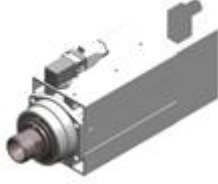
**MT1090 - Y6162Y0061**  
Kw 2,50-S1/3,20-S6 - connection  
ER32 collet - 18.000rpm - rated  
voltage 220V - right rotation



**MT1090 - Y6162Y0027**  
Kw 5,00-S1/6,00-S6 - connection  
ER32 collet - 12.000rpm - rated  
voltage 380V - right rotation



**MT1090 - Y6162Y0030**  
Kw 5,00-S1/6,00-S6 - connection  
ER32 collet - 12.000rpm - rated  
voltage 220V - right rotation



**MT1090 - Y6162Y0036**  
Kw 3,90-S1/5,10-S6 - connection  
ER32 collet - 18.000rpm - rated  
voltage 380V - right rotation



**MT1090 - Y6162Y0076**  
Kw 3,90-S1/5,10-S6 - connection  
ER32 collet - 18.000rpm - rated  
voltage 380V - right rotation



**MT1090 - Y6162Y0063**  
Kw 3,90-S1/5,10-S6 - connection  
ER32 collet - 18.000rpm - rated  
voltage 220V - right rotation



**MT1090 - Y6162Y0064**  
Kw 3,90-S1/5,10-S6 - connection  
ER32 collet - 18.000rpm - rated  
voltage 220V - right rotation



**AT1073 - H6164H0014**  
Kw 5,00-S1/6,00-S6 - connection  
Keyed - 12.000rpm - rated voltage  
380V - right rotation



**AT1090 - Y6164Y0022**  
Kw 5,00-S1/6,00-S6 - connection  
Keyed - 12.000rpm - rated voltage  
380V - right rotation