

**FROM 5,5 - 12 KW**



**ES915 - H6161H0752**  
Kw 6,5-S1/7,6-S6 - HSK E40/F50 - long nose - 32.000rpm - liquid cooling 380V



**ES369 - H6161H0974**  
**Asynchronous**  
Kw 7-S1/8,7-S6 - HSK F63 - 20.000rpm - liquid cooling 380V



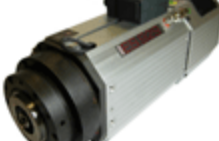
**ES369 - H6161H1076**  
**Synchronous**  
Kw 9-S1/11-S6 - HSK F63 - 20.000rpm - liquid cooling 380V



**ES929 - H6161H0970**  
Kw 7,5-S1/8,6-S6 - ISO 30 - short nose - 24.000rpm - forced air cooling 380V



**ES925 - H6161H0596**  
Kw 7,5-S1/10,0-S6 - HSK F63 - long nose - 24.000rpm - liquid cooling 380V



**ES929 - H6161H1027**  
Kw 5,5-S1/6,6-S6 - HSK F63 - short nose - 20.000rpm - forced air cooling 380V



**ES929 - H6161H1030**  
Kw 7,5-S1/8,6-S6 - HSK F63 - short nose - 24.000rpm - forced air cooling 380V



**ES331 - H6161H0755**  
Kw 7-S1/8,4-S6 - BT30 - 24.000rpm - liquid cooling 380V



**ES331 - H6161H1163**  
Kw 7-S1/8,4-S6 - BT30 - 24.000rpm - liquid cooling 220V



**ES896 - H6161H0966**  
Kw 12-S1/14-S6 - ISO40 - short nose - 15.000rpm - liquid cooling 380V



**ES929 - H6161H0817**  
Kw 7,5-S1/9,0-S6 - ISO 30 - short nose - 24.000rpm - electric fan cooling 380V



**ES929 - H6161H0819**  
Kw 7,5-S1/9,0-S6 - ISO 30 - short nose - 24.000rpm - electric fan cooling 380V - ceramic bearings



**ES929 - H6161H0992**  
Kw 10-S1/12-S6 - HSK F63 - long nose - 24.000rpm - electric fan cooling 220/380V



**ES929 - H6161H0996**  
Kw 10-S1/12-S6 - HSK F63 - long nose - 24.000rpm - liquid cooling 220/380V



**ES929 - H6161H0820**  
Kw 7,5-S1/9,0-S6 - ISO 30 - short nose - 24.000rpm - electric fan cooling 220/380V



**ES929 - H6161H0824**  
Kw 7,5-S1/9,0-S6 - ISO 30 - short nose - 24.000rpm - electric fan cooling 220/380V - ceramic bearings



**ES929 - H6161H0838**  
Kw 7,5-S1/9,0-S6 - ISO30 - short nose - 24.000rpm - forced air cooling 380V



**ES929 - H6161H0836**  
Kw 5,5-S1/6,6-S6 - ISO 30 - short nose - 20.000rpm - electric fan cooling 380V



**ES929 - H6161H0837**  
Kw 5,5-S1/6,6-S6 - ISO 30 - short nose - 20.000rpm - air forced cooling 380V



**ES929 - H6161H0977**  
Kw 5,5-S1/6,6-S6 - ISO 30 - long nose - 20.000rpm - electric fan cooling 380V



**ES929 - H6161H0823**  
Kw 7,5-S1/9,0-S6 - ISO 30 - long nose - 24.000rpm - electric fan cooling 380V



**ES929 - H6161H0821**  
Kw 7,5-S1/9,0-S6 - ISO 30 - long nose - 24.000rpm - electric fan cooling 220/380V



**ES929 - H6161H0822**  
Kw 7,5-S1/9,0-S6 - ISO 30 - long nose - 24.000rpm - electric fan cooling 220/380V - ceramic bearings



**ES929 - H6161H0866**  
Kw 7,5-S1/8,6-S6 - ISO 30 - long nose - 24.000rpm - electric fan cooling 380V



**ES929 - H6161H0766**  
Kw 10,0-S1/12,0-S6 - ISO 30 - long nose - 24.000rpm - electric fan cooling 380V



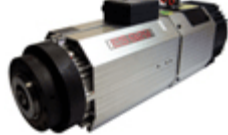
**ES929 - H6161H0835**  
Kw 12,0-S1/14,0-S6 - ISO 30 - short nose - 24.000rpm - electric fan cooling 380V



**ES929 - H6161H0892**  
Kw 12,0-S1/14,0-S6 - ISO 30 - long nose - 28.000rpm - liquid cooling 380V



**ES929 - H6161H0806**  
Kw 7,5-S1/9,0-S6 - HSK F63 - long nose - 24.000rpm - electric fan cooling 380V



**ES929 - H6161H0903**  
Kw 5,5-S1/6-S6 - HSK F63 - short nose - 20.000rpm - electric fan cooling 380V



**ES929 - H6161H0808**  
Kw 7,5-S1/9,0-S6 - HSK F63 - long nose - 24.000rpm - air forced cooling 380V



**ES929 - H6161H0902**  
Kw 7,5-S1/9-S6 - HSK F63 - short nose - 24.000rpm - electric fan cooling 380V



**ES929 - H6161H0563**  
Kw 8,0-S1/9,5-S6 - HSK F63 - long nose - 24.000rpm - electric fan cooling 220V



**ES929 - H6161H0904**  
Kw 10-S1/12-S6 - HSK F63 - short nose - 24.000rpm - forced air cooling 380V



**ES929 - H6161H0736**  
Kw 10,0-S1/12,0-S6 - HSK F63 - short nose - 24.000rpm - electric fan cooling 380V



**ES929 - H6161H0905**  
Kw 12-S1/14-S6 - HSK F63 - short nose - 24.000rpm - liquid cooling 380V



**ES929 - H6161H0669**  
Kw 10,0-S1/12,0-S6 - HSK F63 - long nose - 24.000rpm - electric fan cooling 380V

**FROM 5,5 - 12 KW**



**ES929 - H6161H0677**  
Kw 10,0-S1/12,0-S6 - HSK F63 - long nose - 24.000rpm - air forced cooling 380V



**ES929 - H6161H0753**  
Kw 7,5-S1/8,6-S6 - HSK F63 - long nose - 24.000rpm - electric fan cooling 380V



**ES929 - H6161H0807**  
Kw 12,0-S1/14,0-S6 - HSK F63 - long nose - 24.000rpm - liquid cooling 380V



**ES350 - H6161H0485**  
Kw 6,5-S1/8,0-S6 - HSK E40/F50 - long nose - 36.000rpm - liquid cooling 380V



**ES350 - H6161H0621**  
Kw 8,0-S1/9,0-S6 - HSK E40/F50 - long nose - 36.000rpm - liquid cooling 380V - encoder LB 1Vpp



**ES350 - H6161H0764**  
Kw 8,0-S1/9,0-S6 - HSK E40/F50 - long nose - 36.000rpm - liquid cooling 380V - encoder LB TTL



**ES988 - H6161H0328**  
Kw 11,0-S1/13,5-S6 - HSK F63 - long nose - 24.000rpm - electric fan cooling 380V



**ES988 - H6161H0326**  
Kw 11,0-S1/13,5-S6 - HSK F63 - short nose - 24.000rpm - electric fan cooling 380V



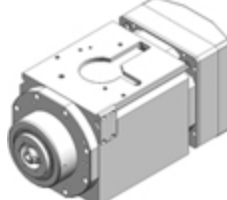
**ES351 - H6161H1036**  
Kw 6,5-S1/7,5-S6 - HSK E32 - 40.000rpm - liquid cooling 380V - Encoder LB 1Vpp



**ES351 - H6161H1209**  
Kw 6,5-S1/7,5-S6 - HSK E32 - 40.000rpm - liquid cooling 380V



**ES362 - H6161H0715**  
Kw 12-S1/15-S6 - HSK F63 - 22.000rpm - liquid cooling 380V



**ES779 - H6161H1064**  
Kw 10,0-S1/12,0-S6 - HSK F63 - short nose - 24.000rpm - liquid cooling 380V - special holes



**ES779 - H6161H0481A**  
Kw 10,0-S1/12,0-S6 - HSK F50 - short nose - 28.000rpm - liquid cooling 380V - holes



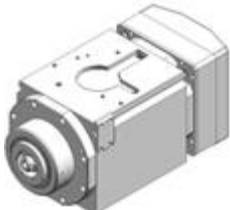
**ES779 - H6161H0517A**  
Kw 10,0-S1/12,0-S6 - HSK F63 - short nose - 24.000rpm - liquid cooling 380V - encoder LB 1Vpp - holes



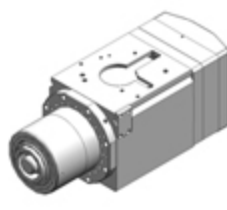
**ES779 - H6161H0534**  
Kw 10,0-S1/12,0-S6 - HSK F63 - short nose - 24.000rpm - liquid cooling 380V - encoder LB TTL - holes



**ES779 - H6161H1121**  
Kw 10,0-S1/12,0-S6 - HSK F63 - short nose - 24.000rpm - liquid cooling 380V - holes - military elect. conn.



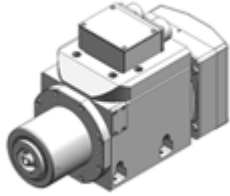
**ES779 - H6161H0588A**  
Kw 10,0-S1/12,0-S6 - HSK F63 - short nose - 24.000rpm - liquid cooling 380V - special holes



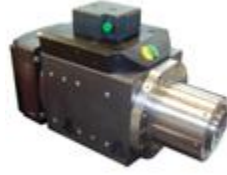
**ES779 - H6161H1082**  
Kw 10-S1/12-S6 - HSK F63 - long nose - 25.000rpm - liquid cooling 380V - special holes



**ES779 - H6161H0592A**  
Kw 10,0-S1/12,0-S6 - HSK F50 - short nose - 24.000rpm - liquid cooling 380V - encoder LB TTL - holes



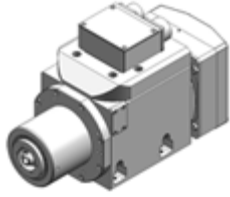
**ES779 - H6161H1049**  
Kw 10,0-S1/12,0-S6 - HSK A63 - long nose - 18.000rpm - liquid cooling 380V - encoder LB TTL - holes - military elect. conn.



**ES779 - H6161H0625A**  
Kw 10,0-S1/12,0-S6 - HSK F63 - long nose - 24.000rpm - liquid cooling 380V - holes - HSD elect. conn.



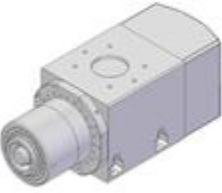
**ES779 - H6161H0626A**  
Kw 10,0-S1/12,0-S6 - HSK F63 - short nose - 24.000rpm - liquid cooling 380V - holes



**ES779 - H6161H1263**  
Kw 10,0-S1/12,0-S6 - HSK F63 - long nose - 24.000rpm - liquid cooling 380V - encoder LB TTL - holes - military elect. conn.



**ES779 - H6161H0688**  
10,0-S1/12,0-S6 Kw - HSK F63 - short nose - 24.000rpm - liquid cooling 380V - encoder LB 1Vpp - special holes



**ES779 - H6161H0721A**  
Kw 10,0-S1/12,0-S6 - HSK E63 - long nose - 15.000rpm - liquid cooling 380V - holes



**ES779 - H6161H0733A**  
Kw 10,0-S1/12,0-S6 - HSK F63 - short nose - 24.000rpm - liquid cooling 380V - encoder LB 1Vpp - holes - military elect. conn.



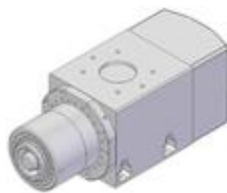
**ES779 - H6161H0737**  
Kw 10,0-S1/12,0-S6 - HSK F50 - short nose - 28.000rpm - liquid cooling 380V - special holes



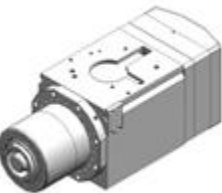
**ES779 - H6161H0746**  
Kw 10,0-S1/12,0-S6 - HSK F63 - long nose - 25.000rpm - liquid cooling 380V - holes - military elect. conn.



**ES779 - H6161H0768**  
Kw 10,0-S1/12,0-S6 - HSK F63 - long nose - 24.000rpm - liquid cooling 380V - special holes - HSD elect. conn.



**ES779 - H6161H0779**  
Kw 10,0-S1/12,0-S6 - HSK F63 - long nose - 24.000rpm - liquid cooling 380V - holes



**ES779 - H6161H0785**  
Kw 10,0-S1/12,0-S6 - HSK E63 - long nose - 15.000rpm - liquid cooling 380V - special holes